

Metsä Wood Floor

Metsä Wood Floor is birch plywood overlaid with multi-layer phenol film with a rough wire mesh pattern. The rough-surfaced Metsä Wood Floor is an heavy-duty, multipurpose plywood flooring panel for applications requiring a reliable, long-lasting anti-slip surface.

APPLICATIONS

Metsä Wood Floor is an ideal panel for transport applications that require highly wear-resistant and rough surfaces:

- Vehicle floors (trailers, trucks, lorries, vans etc.)
- Railway wagon floors
- Ship decking
- Transport platforms

Metsä Wood Floor can also be used in other heavy-duty flooring applications.

MAJOR ADVANTAGES

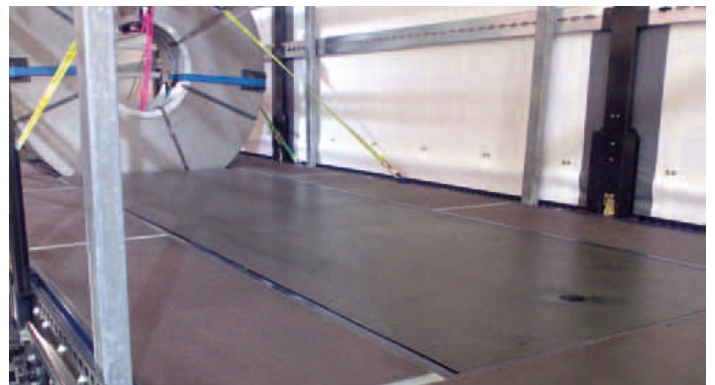
- Extremely durable and weather resistant overlay
- Highly slip resistant wire mesh surface which ensures excellent loading safety
- Light and dimensionally stable
- Strong and rigid
- Withstands impacts and other forms of bruising
- Easy to machine and fasten using conventional woodworking tools and fasteners
- Easy to clean
- Good chemical resistance
- Environmentally friendly
- Weather and boil proof bonding

BASE PLYWOOD

The base plywood of Metsä Wood Floor is Metsä Wood Birch, which is bonded with a weather and boil-resistant phenolic resin adhesive.

OVERLAY

The panel is overlaid with a durable phenolic film, and a rough wire mesh pattern is pressed into the surface during hot-pressing.



There are two different overlay thicknesses and wire mesh patterns available:

- Tight wire mesh Floor 500
- Coarse wire mesh Floor 700

The phenolic film is also applied to the reverse side and this side is normally smooth. Standard film colours are dark brown and black. Other colours are available by order. The colour is even due to the wire mesh pattern.

The phenol film is not UV resistant and the colour may change if exposed to sunlight over prolonged periods.

SURFACE PROPERTIES

The panel has a rough and hard surface. Thick multi-layer overlay can withstand highly abrasive and rolling wear. The surface is also moisture resistant and can tolerate commonly used chemicals as well as diluted acids and alkalis. The surface is easy to clean with water or steam.

ABRASION AND ROLLING WEAR RESISTANCE OF METSÄ WOOD FLOOR (VALUES ARE INDICATIVE AND VALID FOR NEW UNUSED PANELS).

	TABER REVOLUTIONS*	ROLLING WEAR*
Floor 500	3200	7000
Floor 700	4300	9000

* Abrasion resistance is tested according to EN 438-2 / DIN 53799

** Rolling wear resistance is determined by method corresponding to SS 923508. Rolling wear is an average calculated from the random rolling movements with a load of 200 kg, before the first signs of breakdown occur



MetsäWood

EDGE SEALING

Panel edges are sealed against moisture absorption with acrylic edge sealing paint. The standard colour of the edge sealing is dark brown, but edge sealing colour can also be ordered to match the surface film colour. Even though edge sealing slows down the absorption of moisture into the wood, it does not eliminate it completely.

PANEL SIZES

Metsä Wood Floor is available in birch plywood standard sizes:

- 1200 / 1220 / 1250 mm x 2400 / 2440 / 2500 / 3000 / 3050 / 3600 / 3660 mm
- 1500 / 1525 mm x 2500 / 3000 / 3050 / 3600 / 3660 mm

The first measurement indicates the orientation of the surface veneer grain.

Other sizes are available on request. Larger size scarf-jointed XL and KingSize panels are also available by special order, with max. dimensions of 13700 x 2800 mm.

SIZE TOLERANCES

Measured in accordance with standard EN 324, the plywood size and squareness tolerances meet EN 315 requirements.

PANEL TOLERANCES

LENGTH / WIDTH	TOLERANCE
<1000 mm	±1 mm
1000-2000 mm	±2 mm
> 2000 mm	±3 mm
Squareness	±0.1 % or ±1 mm/m
Edge straightness	±0.1 % or ±1 mm/m

THICKNESSES, STRUCTURES AND THICKNESS TOLERANCES

The thickness tolerances fulfil the requirements of standard EN 315 and is in part more stringent than the official requirements.

THICKNESSES, STRUCTURES AND THICKNESS TOLERANCES OF THE PANELS.

NOMINAL THICKNESS	NUMBER OF PLYS	THICKNESS TOLERANCE		WEIGHT
		min. (mm)	max. (mm)	
(mm)	(pcs)			kg/m ²
9	7	8.8	9.5	6.1
12	9	11.5	12.5	8.2
15	11	14.3	15.3	10.2
18	13	17.1	18.1	12.2
21	15	20.0	20.9	14.3
24	17	22.9	23.7	16.3
27	19	25.2	26.8	18.4
30	21	28.1	29.9	20.4

* Moisture content of the product affects its dimensions

* Average density of Metsä Wood birch plywood is 680 kg/m³ (at relative humidity of RH 65%)

* Special structures and thicknesses are available on request

* Customised tolerances are possible but must be agreed separately

BONDING CLASSES

Metsä Wood plywood panels are bonded with a weather and boil-resistant phenolic resin adhesive (WBP, BFU, AW, exterior).

The gluing meets the requirements of the following international standards:

- EN 314-2 / Class 3 (exterior)
- DIN 68705-3 / BFU 100
- BS 6566 Part 8 / WBP

FORMALDEHYDE EMISSIONS

Determined according to EN 717-2, the formaldehyde emitted by Metsä Wood Floor panels falls far below the Class E1 requirement of ≤ 3,5 mg/(m²*h). The formaldehyde emission of Metsä Wood Floor is approximately 0,3 mg/(m²*h).

PANEL STRENGTH PROPERTIES

Metsä Wood Floor strength properties are identical with standard plywood types. Panel strength and elastic properties can be found in Handbook of Finnish Plywood.

MACHINING

Metsä Wood Floor plywood panels can be machined according to customer specification on special request.

PACKING

Metsä Wood Floor panels are packed in moisture resistant plastic wrapping.

PACKING QUANTITIES

PANEL SIZE	mm	NUMBER OF PANELS PER PALLET BY THICKNESS							
		9	12	15	18	21	24	27	30
1500/1525 x 2400-3660		65	50	40	35	30	25	25	20
1200/1220/1250 x 3000-3660									
1500/1525 x 1500-2135		100	75	60	50	45	40	35	30
1200/1220/1250 x 1200-2750									

FURTHER INFORMATION

- Handbook of Finnish Plywood, Finnish Forest Industries Federation, 2001
- Metsä Wood Transport brochure, 2006
- Metsä Wood Plywood brochure, 2006
- www.metsawood.com

METSÄ WOOD

Askonkatu 9 E, FI-15100 Lahti

Tel. +358 10 4650 499, fax +358 10 4650 490

www.metsawood.com

This leaflet is provided for information purposes only and no liability or responsibility of any kind is accepted by Metsä Wood or their representatives, although Metsä Wood has used reasonable efforts to verify the accuracy of any advice, recommendation or information. Metsä Wood reserves the right to alteration of its products, product information and product range without any notice.

